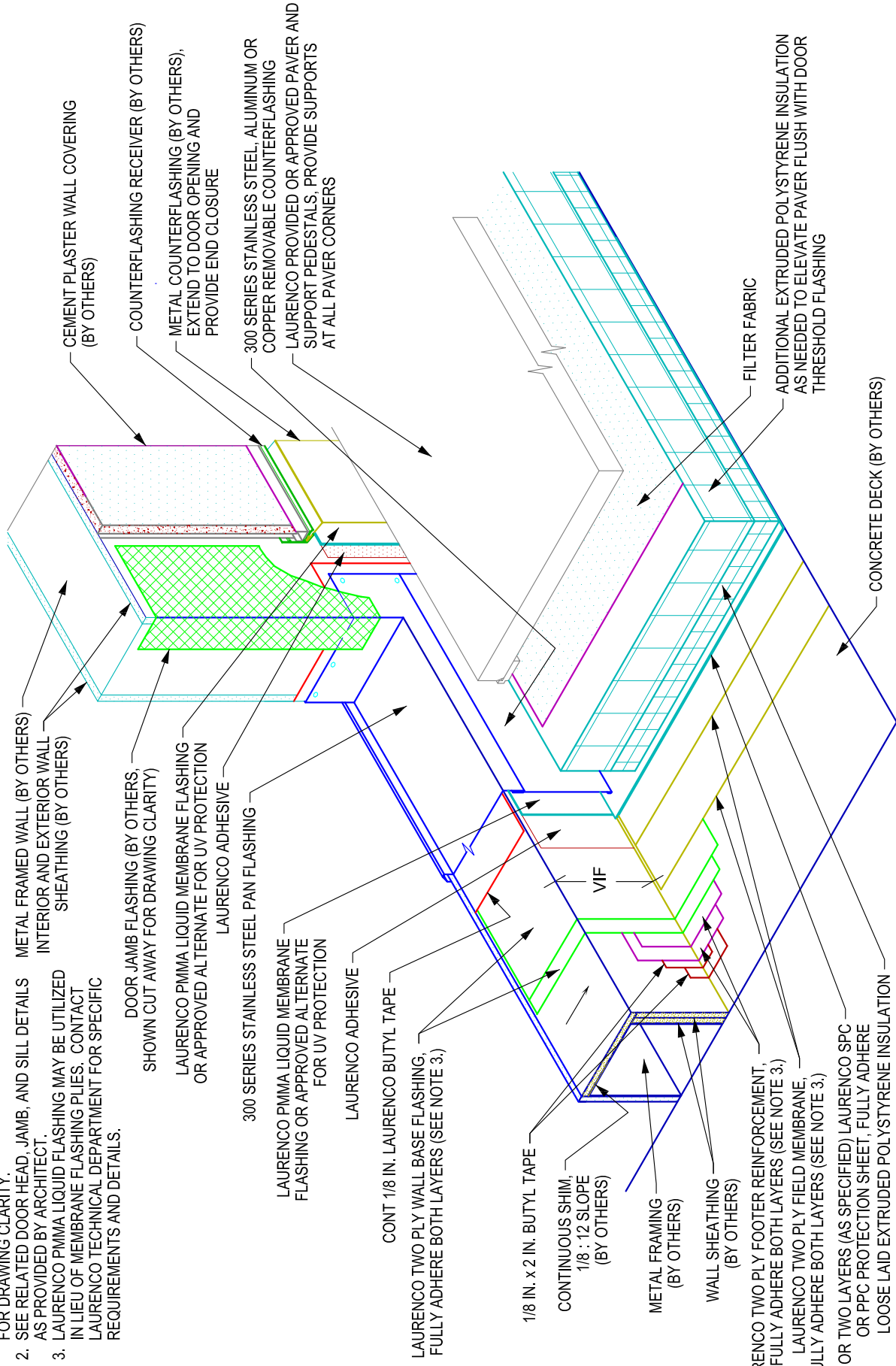


**DETAIL NOTES:**

1. DOOR AND JAMB HARDWARE (BY OTHERS) NOT SHOWN FOR DRAWING CLARITY.
2. SEE RELATED DOOR HEAD, JAMB, AND SILL DETAILS AS PROVIDED BY ARCHITECT.
3. LAURENCO PMMA LIQUID FLASHING MAY BE UTILIZED IN LIEU OF MEMBRANE FLASHING PILES. CONTACT LAURENCO TECHNICAL DEPARTMENT FOR SPECIFIC REQUIREMENTS AND DETAILS.



CEMENT PLASTER WALL COVERING (BY OTHERS)

COUNTERFLASHING RECEIVER (BY OTHERS)

METAL COUNTERFLASHING (BY OTHERS), EXTEND TO DOOR OPENING AND PROVIDE END CLOSURE

300 SERIES STAINLESS STEEL, ALUMINUM OR COPPER REMOVABLE COUNTERFLASHING

LAURENCO PROVIDED OR APPROVED PAVER AND SUPPORT PEDESTALS, PROVIDE SUPPORTS AT ALL PAVER CORNERS

DOOR JAMB FLASHING (BY OTHERS, SHOWN CUT AWAY FOR DRAWING CLARITY)

LAURENCO PMMA LIQUID MEMBRANE FLASHING OR APPROVED ALTERNATE FOR UV PROTECTION

LAURENCO ADHESIVE

300 SERIES STAINLESS STEEL PAN FLASHING

LAURENCO PMMA LIQUID MEMBRANE FLASHING OR APPROVED ALTERNATE FOR UV PROTECTION

LAURENCO ADHESIVE

CONT 1/8 IN. LAURENCO BUTYL TAPE

LAURENCO TWO PLY WALL BASE FLASHING, FULLY ADHERE BOTH LAYERS (SEE NOTE 3.)

1/8 IN. x 2 IN. BUTYL TAPE

CONTINUOUS SHIM; 1/8" : 1/2" SLOPE (BY OTHERS)

METAL FRAMING (BY OTHERS)

WALL SHEATHING (BY OTHERS)

LAURENCO TWO PLY FOOTER REINFORCEMENT, FULLY ADHERE BOTH LAYERS (SEE NOTE 3.)

LAURENCO TWO PLY FIELD MEMBRANE, FULLY ADHERE BOTH LAYERS (SEE NOTE 3.)

ONE OR TWO LAYERS (AS SPECIFIED) LAURENCO SPC OR PPC PROTECTION SHEET, FULLY ADHERE

LOOSE LAID EXTRUDED POLYSTYRENE INSULATION

FILTER FABRIC

ADDITIONAL EXTRUDED POLYSTYRENE INSULATION AS NEEDED TO ELEVATE PAVER FLUSH WITH DOOR THRESHOLD FLASHING

CONCRETE DECK (BY OTHERS)



LAURENCO WATERPROOFING™ ©  
A DIVISION OF FBC CHEMICAL CORPORATION

NOT TO SCALE

5000

**DOOR THRESHOLD AT PROTECTED MEMBRANE**